

FANTEC QB-X8US3-6G

8x3,5" SATA HDD USB3.0 eSATA

Quick Installation Guide

Version 1.0

STEP 1 Note

● Operation System

Windows Vista / 7 / 8 / 8.1 (32/64bit),
Macintosh OS X 10.5 or later, Linux

● Operation Environment

Temperature 0 ~ 50 °C Humidity 90 □ RH

● References

- Smart fan controlled by the built-in thermal sensor and it comes with 2 modes (auto/ manual) and 3 levels of speed:
Level 1: higher than 55 °C 2,500rpm ~ 3,500rpm
Level 2: 45 °C ~ 54 °C 1,800rpm ~ 2,500rpm
Level 3: below 45 °C 1,200rpm ~ 1,800rpm
- eSATA transfer data up to 6.0 Gbps
USB 3.0 transfer data up to 5.0 Gbps
USB 1.1 / 2.0 / 3.0 compatible
- Interface of USB / eSATA can not be used at the same time.
- Under Windows Vista / 7, users can enable GPT when initializing HDD with a total capacity of more than 2TB.
- Via eSATA port a controller with port multiplier (PM) is required.

STEP 2 Reminders

- USB port of your PC must support power-off function so that the device would go to sleeping mode. Setting up motherboard's (power management) in S3 is strongly recommended. For more details, please refer to user guide of motherboard BIOS setting.
- Smart fan controlled by the built-in thermal sensor and it comes with 2 modes (auto / manual) and 3 levels of speed □

Low	below	45°C		1200rpm
Medium	between	45°C~55°C		1800rpm
High	hotter than	55°C		2500rpm
- Maximum HDD capacity: 6TB each HDD (status: October 2014), 8 single hard drives are displayed at PC (JBOD)
- Follow all instructions.
 - Do not place this device near water.
 - Clean only with dry cloth.
 - Do not block any ventilation openings.
 - Only use attachments/accessories.
 - Do not drop or shake the device.
 - Do not move the device when it is powered on.

Please visit our website for more information:

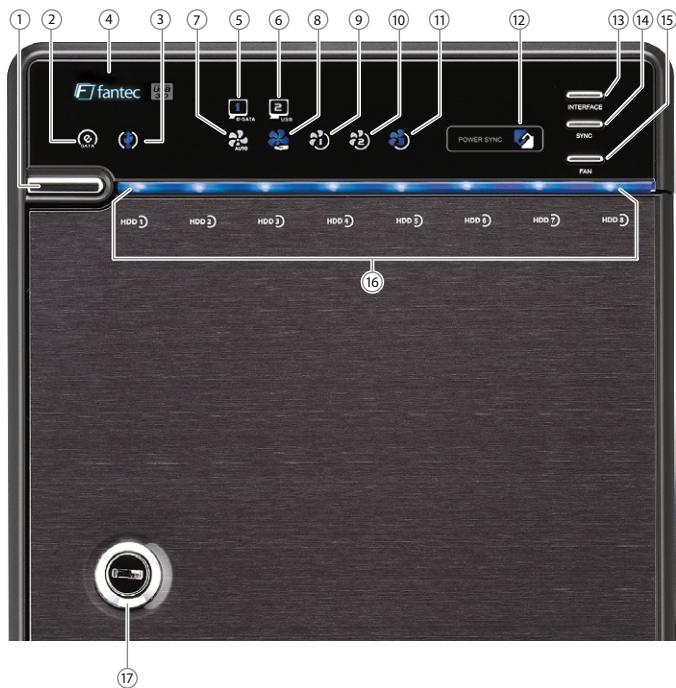


www.fantec.eu

www.fantec-forum.com

STEP 3 Front Panel Overview

● LED Indication / Button



Descriptions

- Power button** It needs to be pressed and **held** for 3 seconds to power off.
ⓘ This design prevents accidental power off.
- eSATA** Link interface use
- USB** Link interface use
- Blue** Power on
Orange Sleep mode
- eSATA** Link interface option
- USB** Link interface option
- Smart Fan automatic mode**
- Smart Fan manual mode**
- Fan speed** level 1
- Fan speed** level 2
- Fan speed** level 3
- Synchronization comes in 3 modes:**

Blue	When the PC is off, the device goes off In 15 seconds.
Orange	When the PC is off, the device goes to sleep mode.
Off	Synchronization is off.
- Interface button**
- Synchronization mode button**
It needs to be pressed and **held** for 3 seconds to power off.
ⓘ This design prevents accidental power off.
- Smart fan button** : auto, manual and fan speed from level 1 to level 3
- HDD1 / HDD2 / HDD3 / HDD4 / HDD5 / HDD6 / HDD7 / HDD8**

Blue	active
Purple	access
- Key slot**

STEP 4 Rear Panel Overview

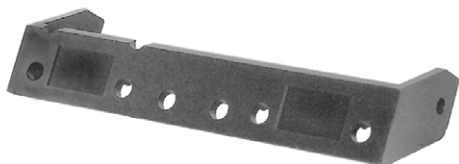
● Rear Panel



Descriptions

1. Fan
2. eSATA port
3. USB 3.0 / USB 2.0 port
4. AC Input port

● HDD Handle

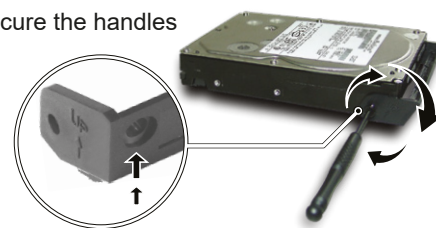


● Keys



STEP 5 Quick Installation Guide

1. Please use screws to secure the handles to the HDDs.



2. Unlock the cover with the key supplied and press onto the lock to open the cover.



3. Open the inner covers.



4. Install the HDDs from up to down.



5. Close and secure the covers.

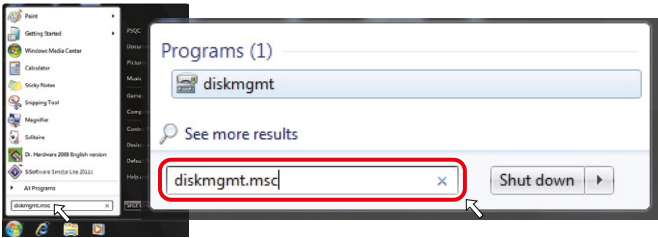
6. Plug in USB or eSATA cable

① USB interface is the default setting and if users wish to change to eSATA, press and **hold** "Interface" for 3 seconds.

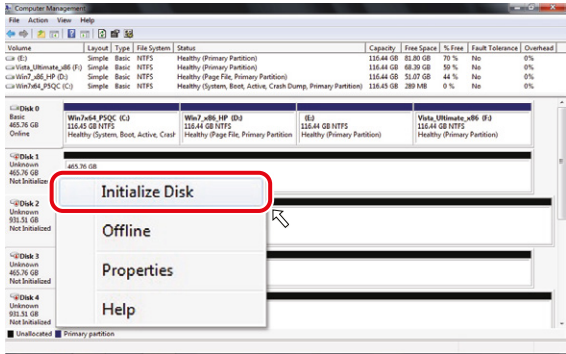
STEP 6 Initialization

MS Windows (32/64 bit)

If the HDD is uninitialized, you may have to initialize it by doing steps as followed: At first click "Start" at your PC and key in "diskmgmt.msc". After that please press "OK" key.



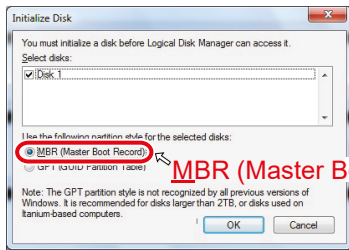
1. Start disk initialization.



Start disk initialization.

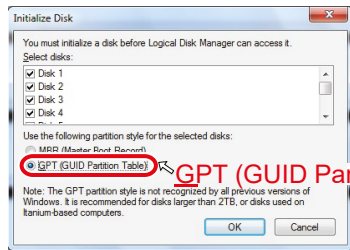
Note: Please enable GPT (Vista/7) if the total capacity is more than 2TB and enable MBR if the total capacity is less than 2TB.

Activate MBR if total volume is less than 2TB



MBR (Master Boot Record)

Activate GPT if total volume is more than 2TB



GPT (GUID Partition Table)

Mac OS X 10.5 or later

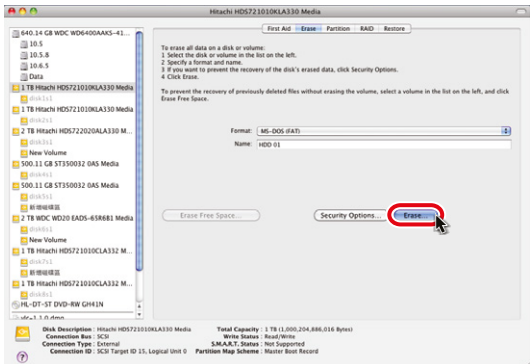
1. Click on Programs > Utility > Disk Utility icon.



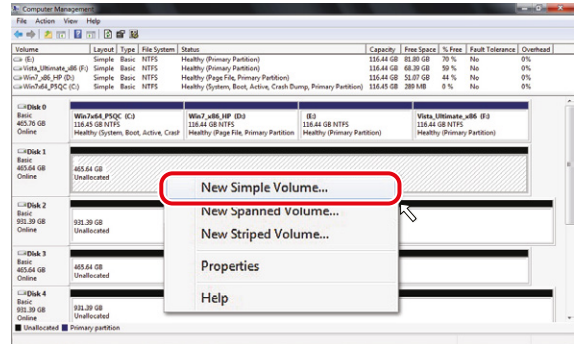
2. HDD initialize...



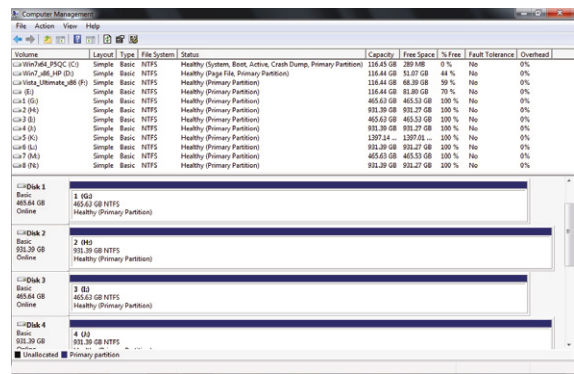
3. Click Erase



2. Create new partition and format disk.



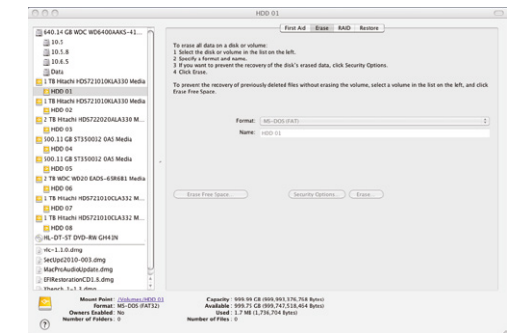
3. HDD format completed.



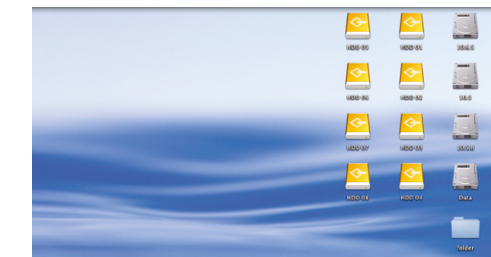
4. Click Erase



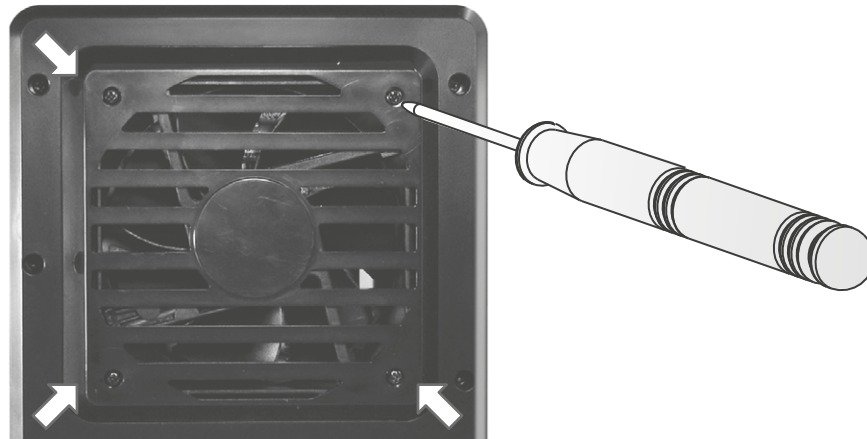
5. HDD format in process



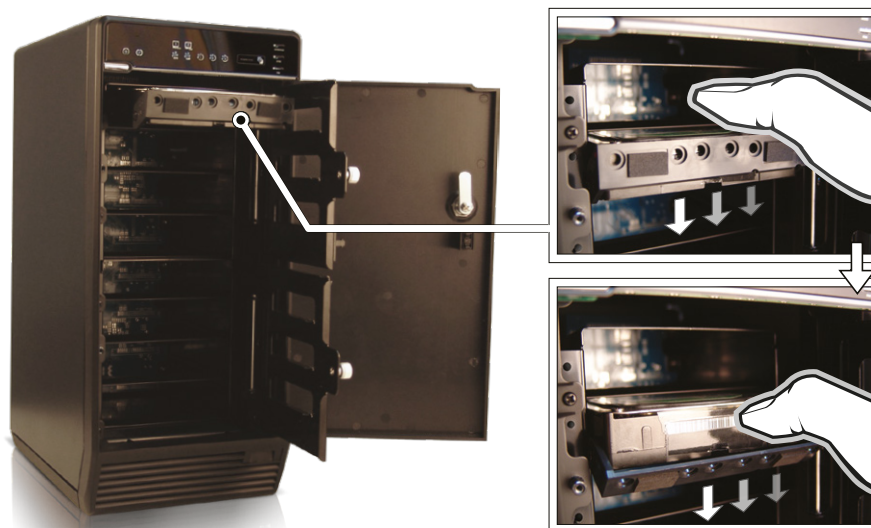
6. Format completed



1. If the FANTEC QB-X8US3-6G (2-8 HDDs installed) is connected to the PC with eSATA cable and the PC does not recognize these 4 SATA HDDs, please check if the eSATA controller supports Port Multiplier or update the eSATA driver version.
2. If the FANTEC QB-X8US3-6G (2-8 HDDs installed) takes too long to initialize, please check if the HDD is securely installed or update the eSATA driver version (for the housing are no drivers necessary!).
3. If the transfer rate seems to be too low, please check if the SATA HDD jumper is set up in 1.5 or 3.0 Gbps.
4. If there is noise with the fan, unscrew the fan, take out the cover, clean the fan and assemble it back.



5. To take the HDD out of the device, slightly press down the handle and pull it out.

**Address for warranty return shipments:**

FANTEC GmbH
Department RMA/Service
Billwerder Billdeich 605B
21033 Hamburg Germany

Declaration of conformity:

<http://www.fantec.de/unternehmen/bestimmungenrichtlinien/ce/>



www.fantec.com • www.fantec-forum.com



service@fantec.de

F fantec