

FANTEC ALU30mSATA Manual



Contents: FANTEC ALU30mSATA, screws, USB 3.0 cable, manual

Hardware Installation Guide

STEP 1: Open the enclosure and pull out the electronic board. Push the mSATA SSD towards the interface and make sure the connector is well connected.



STEP 2: Then please fix the screws at the left and right side of the mSATA SSD.



STEP 3: Then install the electronic board into the enclosure and fix the rear panel with the provided screws. Finally add the self-adhesive rear cover to hide the screws behind it.

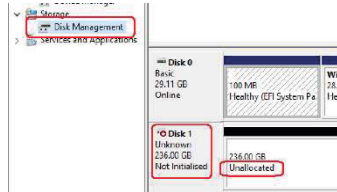


SSD Formatting Guide

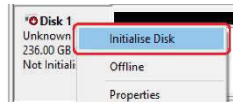
STEP 1: Right-Click on "This PC" icon and select the "Manage" column.



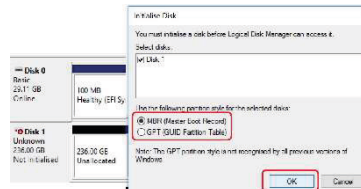
STEP 2: Select "Disk Management" and you will see your SSD showed "Not initialised" & "Unallocated".



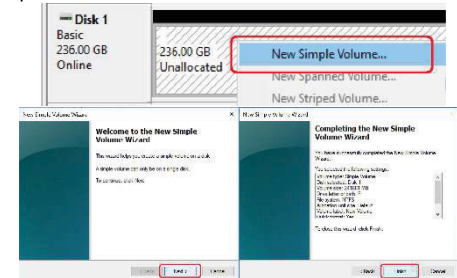
STEP 3: Right-Click on the red Symbol and select "Initialise Disk".



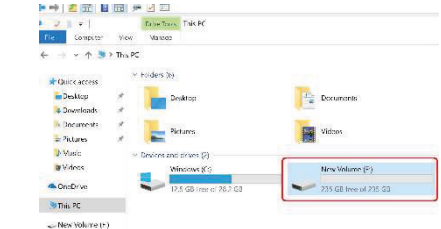
STEP 4: Select "MBR" mode for a volume capacity up to 2TB. For more than 2TB select "GPT" mode. Then press OK button finish the initialising procedure.



STEP 5: Right-Click on the "Unallocated" block and select "New Simple Volume". Then follow up the dialogue box with pressing the "Next" button until the "Finish" button will start the formatting procedure.



STEP 6: When formatting is completed, the external SSD will be recognized as a "New Volume".



Address for warranty return shipments:

FANTEC GmbH
Department RMA/Service
Billwerder Billdeich 605B
21033 Hamburg Germany

service@fantec.de

Declaration of conformity:
<http://www.fantec.de/unternehmen/bestimmungenrichtlinien/ce/>

www.fantec.de • www.fantec-forum.de