

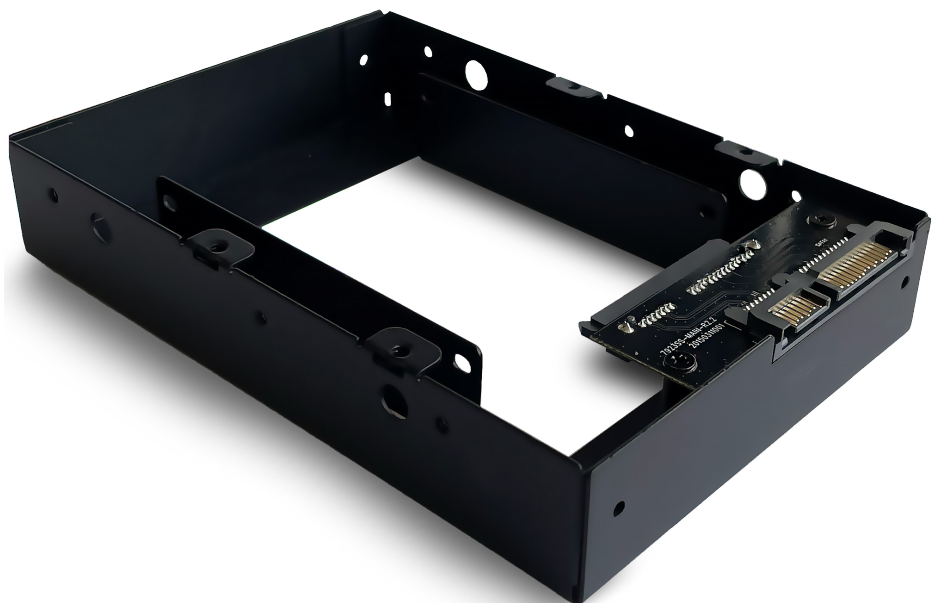


FANTEC MB-BRACKET 25

2.5" to 3.5" adapter for the installation of an SSD or 2.5" HDD

The MB-Bracket 25 is a practical 2.5 to 3.5 inch adapter for the installation of an SSD or 2.5" HDD. It is suitable for all products of the FANTEC MB series. And can even be screwed directly into your PC.

- ▶ 2,5" adapter for HDDs/SSDs to 3,5"
- ▶ for HDDs with a height below 15mm



Technical Data

EQUIPMENT

- 2.5" adapter for SSD/HDD to 3.5"
- for hard disks with a height under 15mm
- 166gr
- 146mm x 101mm x 26mm

SUITABLE FOR

- All FANTEC MB-enclosures, e.g.
- FANTEC MB-X2U31R (2523)
- FANTEC MB-X4U31(2528)
- FANTEC MB-X5U31H (2530)
- FANTEC MB-X10U31 (2532)
- Even directly in the PC

SCOPE OF DELIVERY

- 2x MB-Bracket 25
- Screws
- Manual

DIMENSIONS (ITEM)

- 146 x 101 x 26mm (W x D x H)
- Net weight 0.166kg - per piece

LOGISTIC DATA

- Retail box dimensions:
(172 x 76 x 137mm - W x D x H)
- Packaging unit dimensions:
(390 x 360 x 315 mm - W x D x H)
- Gross weight with retail box:
0.456kg per retail box
- Packaging unit:
20 pieces per carton
- Total weight carton:
9,5kg
- Country of origin:
China