

FANTEC MB-X10U31

10x3,5" SATA HDD USB3.1 Generation II
Typ-C 10G

Manual

Version 1.0

Please visit our website for more information:



www.fantec.de
service@fantec.de

Step 1 Information

● Operation System

Windows 7, 8, 10
Mac OS 10.5 or later
Linux Kernel 2.4 or later

● Environment

Temperature 5°C ~ 55°C Humidity 20% ~ 80 %

● USB 3.1 Type-C connection

USB 3.1 Type-C connection, Gen II up to 10 Gbps.

● USB 2.0/3.0 compatible

Additional cable required, cable converter adapters not recommended

● Smart Fan

Smart fan controlled by the built-in thermal sensor.

Step 2 Hints

Follow all instructions.

- Do not use the device in the immediate vicinity of water.
- Clean the device with a soft, dry cloth.
- Do not block ventilation holes.
- Perform the installation according to these instructions.
- Do not operate the device in the immediate vicinity of heat sources such as heaters, or other devices that give off heat.
- Lay the power cord so that nobody can trip over it. Make sure that the cables are not pinched and that no heavy objects are parked on them.
- Use only accessories recommended by the manufacturer.
- Disconnect the power plug during a thunderstorm or if you do not use the device for a long time.
- Always contact our service team for repairs. Maintenance is required if device, power cord or plug damaged, liquids or foreign objects in the device have penetrated, or the device is not working normally or was dropped.
- Do not shake the device, do not drop it.
- Do not use the device during operation.
- Do not pull the power plug by the cable from the socket.
- Before you turn off the power or turn off a hard drive or unplug the USB cable, make sure partitions in use are no longer actively used by your operating system. Lead a so-called "unmounting" or "hanging out" ("eject").

Step 3 Front Panel

● LED Indication / Button



Description

1. Power button for each hard drive

2. Status LED for each hard drive:

lights up blue: hard disk is switched on and active.

flashes purple: the hard disk is being accessed.

lights up red: the slot is switched on, but there is no hard drive in the slot or the hard disk is defective.

LED is off: the hard disk is switched off, or the hard disk is inactive.

3. Ability to lock for each disk.

4. Door handle on each front door for each hard drive.

5. Slot for each hard drive.

Door keys



Step 4 Rear Panel



Description

1. Fan
2. USB-C port
3. AC Input 100~240V
4. Central power switch

Step 5 Installation

1. Connect the power cord and turn on the device. Plug in the USB cable and connect the other end of the cable to your PC.

2. Unlock the door and pull the door handle to open the slot.



3. Open the door.



4. Slide the hard drives into the case.



5. Close the door and turn on the hard drive by briefly pressing the respective power button.

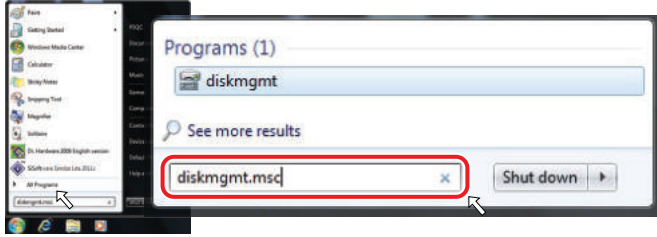


6. To remove the hard drive, run in your operating system "Safely remove hardware", turn off the hard drive by briefly pressing the switch, open the door and remove the hard drive again.

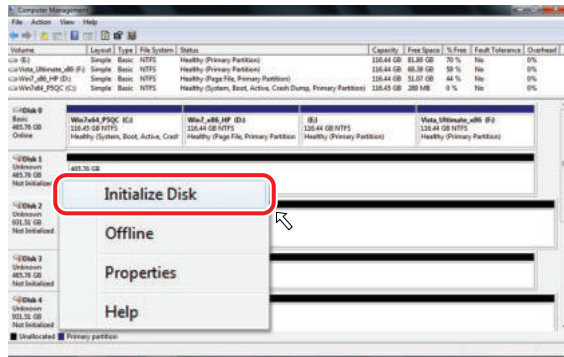
Step 6 Initialization

Microsoft Windows

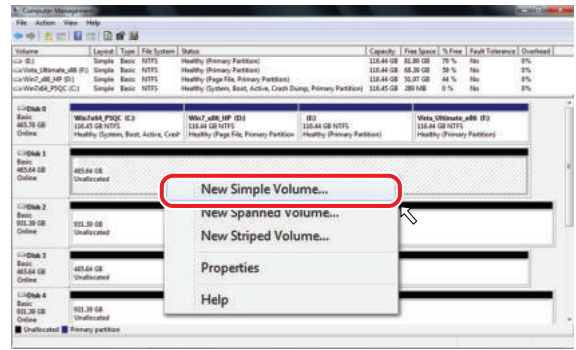
If you are using unformatted disks, they must first be initialized. To do this tap the Windows key on your keyboard and enter "diskmgmt.msc" (without quotation marks). Then press the "ENTER" key.



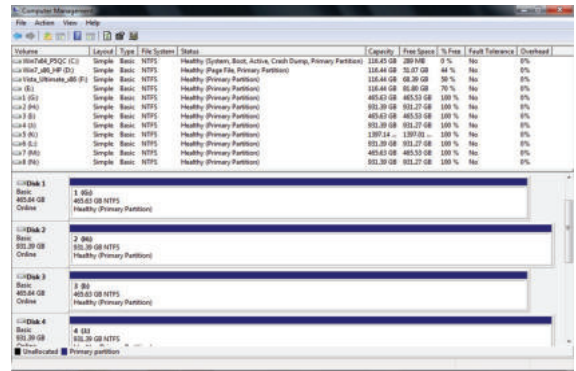
1. Start disk initialization



2. Create new partition and format disk



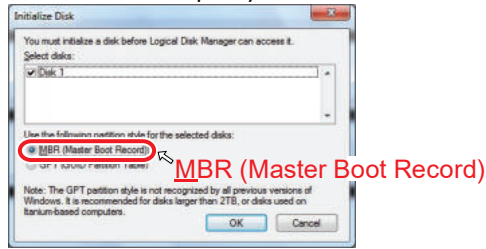
3. HDD format completed



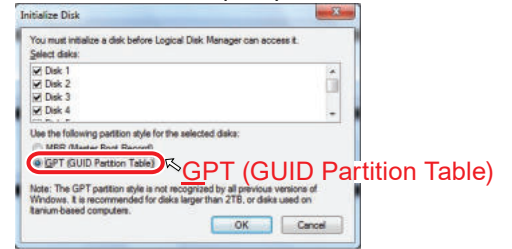
MBR or GPT Modus

Important: Please enable the GPT mode when the total capacity exceeds 2TB, otherwise choose the MBR mode.

Enable MBR if the total capacity does not exceed 2TB



Enable GPT if the total capacity exceeds 2TB



MAC OS X 10.13 or later

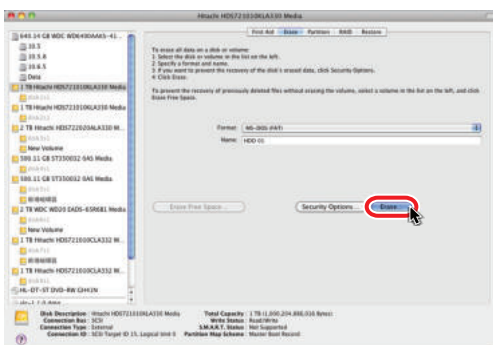
1. Click "Disk Utility" icon.



2. HDD initialize..



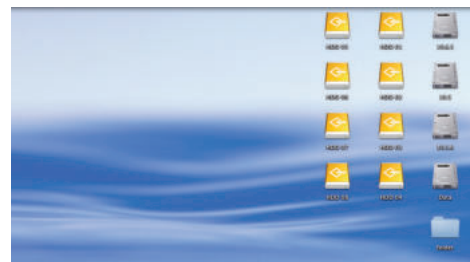
3. Click "Erase"



4. HDD format in process.



5. Format completed



1. If the inserted hard drive does not turn on, check whether the power cable is properly plugged in and the central power switch is switched on.
2. If the USB connection is not established, check whether the USB cable is plugged in.
3. If your USB is causing problems, check this:
 - a. USB3 drivers that are supplied with the installation of an operating system are often not optimally matched to your mainboard. If a USB connection does not work to your satisfaction, install the correct USB3 drivers. You can usually find them on the homepage of the manufacturer of your mainboard, suitable for your operating system. If you do not find the USB3 drivers listed, install all drivers that the manufacturer provides for your mainboard, suitable for your operating system.
 - b. If you are using a PC card for your USB: please use the driver from the manufacturer of the PC card that is suitable for the operating system you are using.
 - c. The standby behavior of hard disks is usually controlled by the operating system. Often in the advanced power saving options. If your hard drives shut down unusually quickly, check the settings there. PCs that use an SSD switch it off for a very short time to save energy. With many operating systems, this switching off of data carriers affects all connected hard drives and can have a disruptive effect. Turn off these techniques to find sources of error and correct the settings at a reasonable time.
 - d. Some PCs use energy saving techniques on the USB interface. Devices with rechargeable batteries in particular like to save energy, but this can have a disruptive effect. You can often find information about this in the energy saving options. Switch off these techniques first to find sources of error. Then switch on the techniques one by one. Or please inquire with the service department of your PC manufacturer if a USB interface shuts down unusually often and thus disrupts the operation of a USB multiple hard disk housing.
4. To prevent data loss, please pay attention to these instructions:
 - Do not unplug a USB cable until you have performed a so-called "Unmounting", "Remove hardware safely", "Eject", "Eject" or "Unmount the partition".
 - Back up important data regularly so that there are at least two copies of important data.
 - Only use the hard drives if everything works to your satisfaction. Drivers can be changed by software updates and unstable USB connections can lead to data loss. Respond to changes in your operating system in good time.
5. The power button engages with a short press and disengages with another short press. Accordingly, the hard disk is switched on when the switch is engaged and switched off otherwise. When switched on, the switch is slightly recessed. When the power button is engaged and you apply power to the enclosure, an inserted hard drive will wake up. If you removed a hard drive from the case but forgot to switch off the switch, a red LED will show you that no hard drive is currently inserted in the case. Just turn the switch off again, then the red LED will go out.

Adress for RMA shipments:

FANTEC GmbH
Abteilung RMA/Service
Billwerder Billdeich 605B
21033 Hamburg



www.fantec.de



service@fantec.de

Declaration of Conformity:

We declare that the article complies with the provisions of Directive 1999/5 / EC.
<http://www.fantec.de/unternehmen/bestimmungenrichtlinien/ce/>

