

FANTEC QB-X8U31

8x3,5" SATA HDD USB3.1 Generation II
Typ-C 10G

Manual

Version 1.0

Schritt 1 Information

● Operation System

Windows 10 / Windows 7
Mac OS X 10.13 or later

● Operation Environment

Temperature 0 ~ 40 °C Humidity 5 % ~ 90 %

● Hot-plug for USB-C interface

Supports USB 3.1 Gen-II 10Gbps transfer speed

● USB 2.0/3.0 compatible

Additional cable required, cable converter adapters
not recommended

● Smart Fan

Smart fan controlled by the built-in thermal sensor and it
comes with 2 modes (auto / manual) and 3 levels of speed:

Low	below 45°C	1200 rpm
Medium	45°C ~ 54°C	1600 rpm
High	higher than 55°C	2600 rpm

STEP 2 Hints

Follow all instructions.

- Do not use the device in the immediate vicinity of water.
- Clean the device with a soft, dry cloth.
- Do not block ventilation holes.
- Perform the installation according to these instructions.
- Do not operate the device in the immediate vicinity of heat sources
such as heaters, or other devices that give off heat.
- Lay the power cord so that nobody can trip over it.
Make sure that the cables are not pinched and that
no heavy objects are parked on them.
- Use only accessories recommended by the manufacturer.
- Disconnect the power plug during a thunderstorm or
if you do not use the device for a long time.
- Always contact our service team for repairs.
Maintenance is required if device, power cord or plug
damaged, liquids or foreign objects in the device
have penetrated, or the device is not working normally or
was dropped.
- Do not shake the device, do not drop it.
- Do not use the device during operation.
- Do not pull the power plug by the cable from the socket.

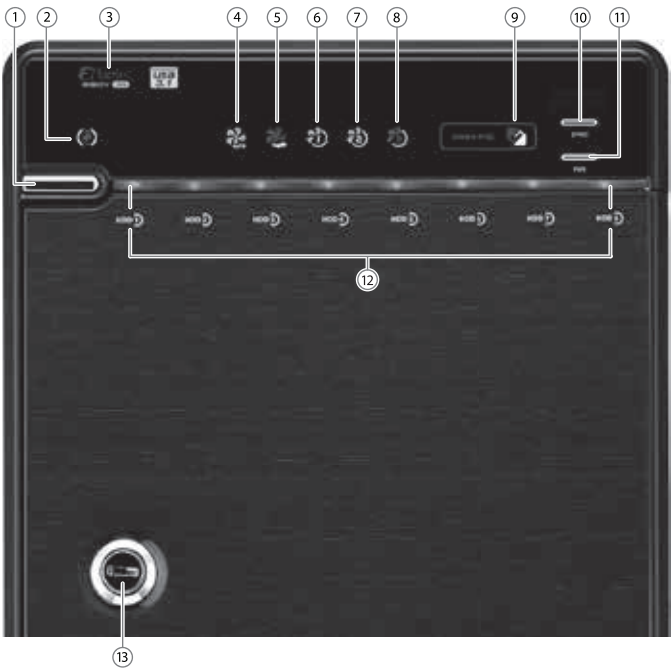
Please visit our website for more information:



www.fantec.com
support@fantec.com

Schritt 3 Front Panel

● LED Indication / Button



Descriptions

1. Power button
It needs to be pressed and **held** for 3 seconds to power off.
⚠ This design prevents accidental power off.
2. USB Status
Link interface use
3. Power Indicator Status
Blue light | Power on
Orange light | Sleep mode
4. Smart Fan automatic mode
5. Smart Fan manual mode
6. Fan speed / level 1
7. Fan speed / level 2
8. Fan speed / level 3
9. Synchronization comes in 2 modes
Orange light | When the PC is off,
the device goes to sleep mode.
Off | Synchronization is off.
10. Synchronization mode button
Switch power Sync mode (no power Sync / Hibernate)
It needs to be pressed and held for 3 seconds to power off.
⚠ This design prevents accidental power off.
11. Smart Fan button
Controls auto & manual modes and fan speed
from level 1 to level 3.
12. HDD1 / HDD2 / HDD3 / HDD4
HDD5 / HDD6 / HDD7 / HDD8 Status
Blue Flashing light | Read
13. Key slot

STEP 4 Rear Panel



Descriptions

1. Fan
2. Security lock
3. USB-C port (Connect with PC/Mac)
4. AC Input port

● HDD Handle



● Keys

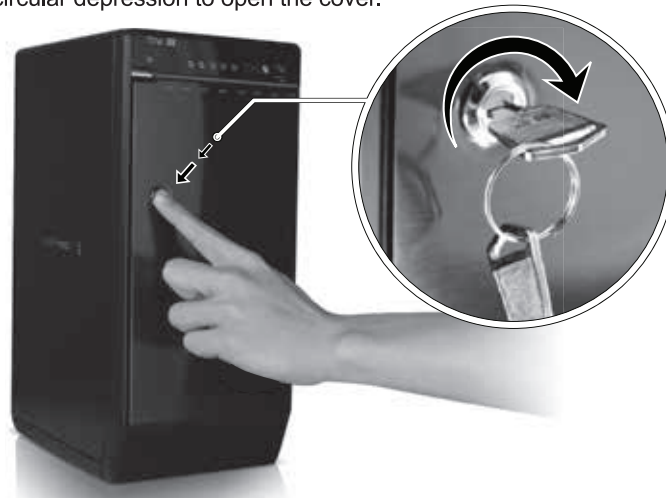


STEP 5 Installation

1. Please use the provided handles to secure the 3,5" HDDs with screws.



2. Unlock the cover with the key supplied and press the circular depression to open the cover.



3. Release the inner covers.



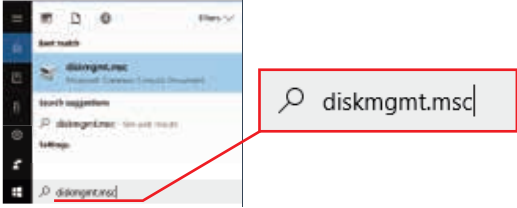
4. Install the HDDs from up to down.



⚠ Make sure the HDD is securely installed first at all times. Otherwise the PC may not recognize the device.

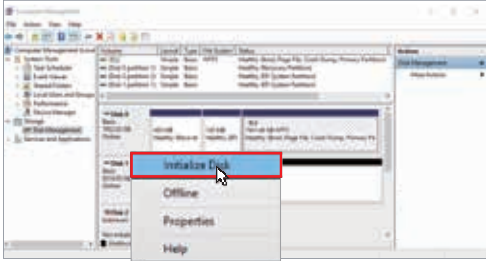
5. Close and secure the covers.
6. Connect the power cord to the device, plug in USB-C cable in the rear panel and power on the device.

Microsoft Windows

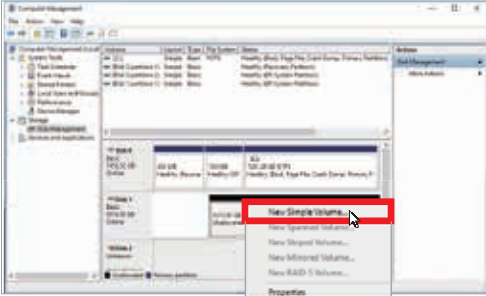


If you are using unformatted disks, they must first be initialized.
To do this tap the Windows key on your keyboard and enter "diskmgmt.msc"
(without quotation marks). Then press the "ENTER" key.

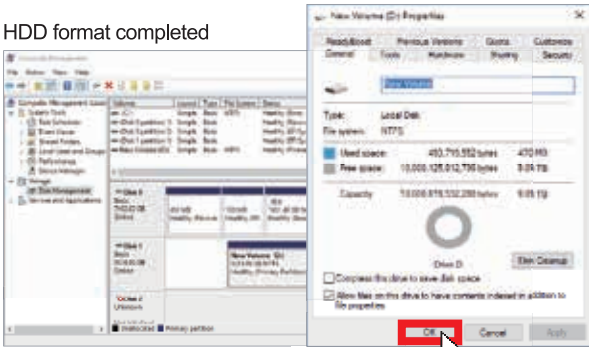
1. Start disk initialization



2. Create new partition and format disk



3. HDD format completed



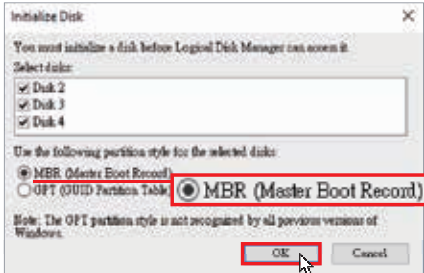
Start disk initialization

Please enable the GPT mode when the total capacity exceeds 2TB,
otherwise choose the MBR mode.

Enable GPT if the total capacity exceeds 2TB.



Enable MBR if the total capacity does not exceed 2TB.

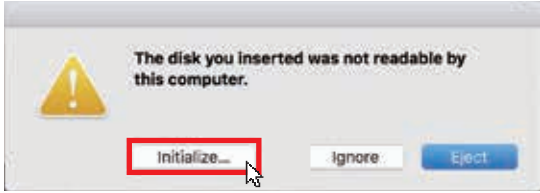


Mac OS X 10.13 or later

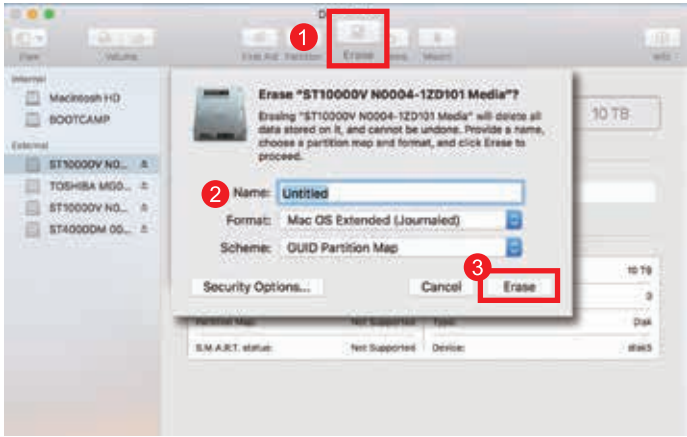
1. Click "Disk Utility" icon.



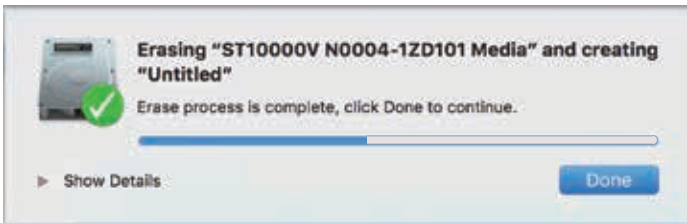
2. HDD initialize...



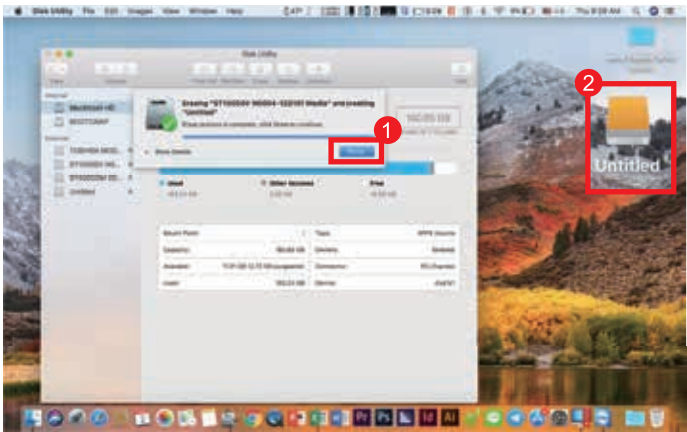
3. Click "Erase"



4. HDD format in process



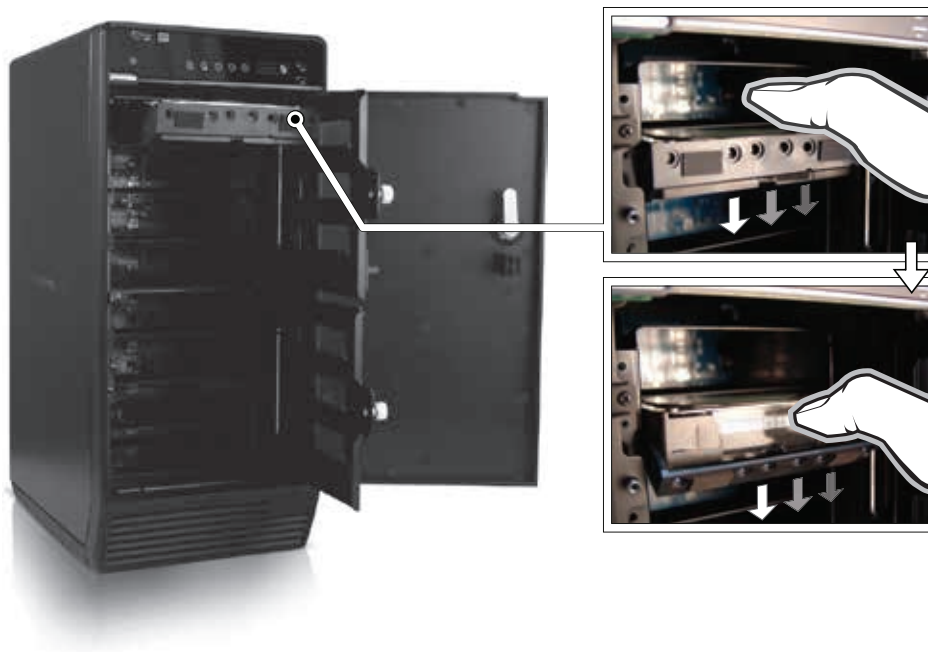
5. Format completed



1. If the device takes too long to detect HDD, please check if the HDD is securely installed or update the drivers according to your hardware manufacture (PC or USB-card).
2. If the fan is noisy pull out the power cord, unscrew and take out the fan cover, clean the fan and assemble it back.
3. If the fan noise is still present or it stop working, replace the fan. Fan size is 80x80x20mm 2 pins.



4. To take the HDD out from the device, lightly press down the handle and pull it out.



www.fantec.com



support@fantec.com

Declaration of Conformity:

We declare that the article complies with the provisions of Directive 1999/5 / EC.
<http://www.fantec.de/unternehmen/bestimmungenrichtlinien/ce/>

Typing errors, errors and modifications are subject to change.
© FANTEC GmbH, 2019 - All rights reserved.

