

**PCIe 3.0/4.0 NVMe adapter with  
tray for 1x NVMe SSD  
in form factor 2230 bis 2280.  
Simple and Tool-free**

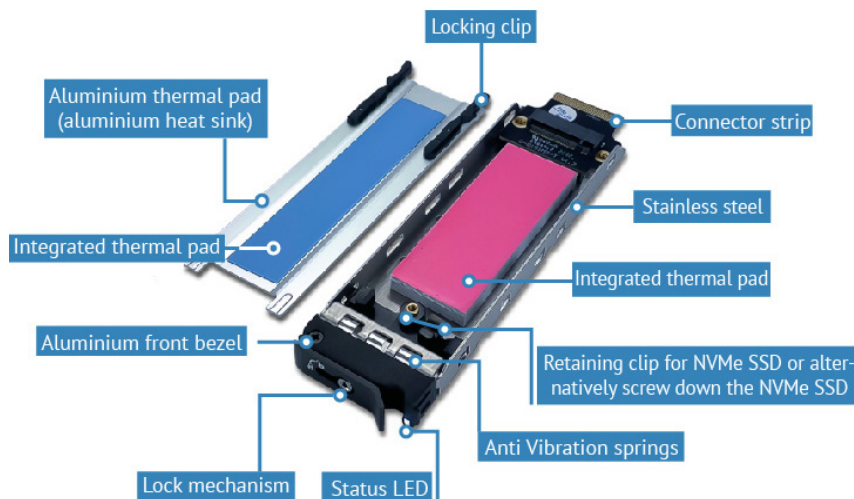
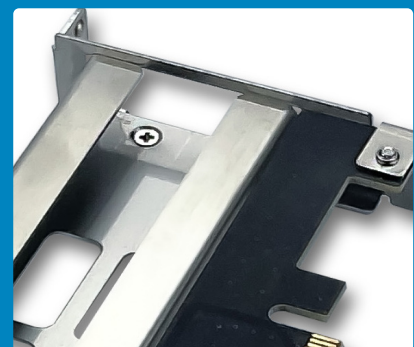


## FANTEC NVMePCIe-WL-TR-1

With the FANTEC PCIe card, you can use an NVMe PCIe SSD internally, exchangeably in your PC. The NVMe SSD is mounted on a slot without tools and inserted and locked into the removable frame of the card at the back of your PC via the slot bracket. This allows you to use and change the NVMe in your PC quickly, securely, conveniently and without tools - without opening the PC.

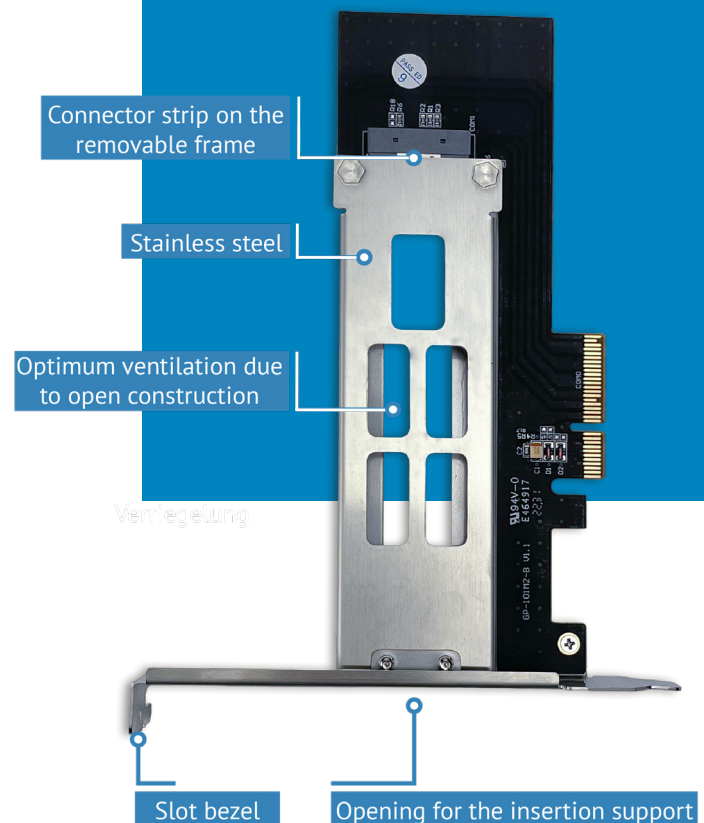
**Optimum protection:** Your NVMe is safely housed. The sensitive contacts of the NVMe are protected. The slide-in rack uses its own connector strip.

**Optimal cooling:** Your NVMe is thermally coupled inside the slide-in rack with a heat conducting pad to the aluminium heat conducting plate. The heat is conducted via the stainless steel slide-in frame to the solid slot bracket. Due to the open and air-permeable design, the operating heat of your NVMe is optimally dissipated.



## Specifications

- PCIe PC adapter card for 1x PCIe NVMe SSD.
- NVMe SSD removable frame for fast, tool-free replacement of the data carrier.
- M.2 NVMe M-key SSD in form factor 2230 to 2280. Thermal pas is prepared for installation of a 2280. Must be shortened if necessary.
- M.2 NVMe can be mounted without tools. In addition, there is the option of screwing the SSD in place.
- For PCIe 3.0/4.0 x4 NVMe M.2 M-key SSD / PCIe x4 bus slot / PCI Express x4 lane host adapter.
- Transfer rates up to 64Gbit/sec. Depending on the NVMe used and the mainboard.
- Adapters, slot bezels and carrier unit made of stainless steel. Heat conduction plate and front panel of the carrier made of aluminium.
- Two-colour LED signals operating status.
- Stainless steel anti-vibration springs reduce operating noise of the PC.
- Slot brackets: "full height" & "low profile".
- Additional slot brackets available as accessories with item number 2519.
- Usability and bootability depend on the mainboard used and the UEFI version installed. For information on these topics, please contact the manufacturer of your mainboard.
- When inserting the carrier, make sure that it is properly locked: please push the carrier completely into the removable frame.



## Technical data

### System requirements

- A free x4, x8 or x16 PCIe slot.
- Windows, Linux
- Please ask the manufacturer of your of your mainboard whether or how an NVMe SSD can be used or booted in your mainboard.

### Note

- When inserting the carrier, make sure that it is properly locked: please push the slide-in frame completely into the slot.

### Scope of delivery

- NVMePCIe-WL-TR-1 PC card
- Art.-No. 2522 - EAN 4250273425222
- Tray
- Aluminium heat dissipation (heat sink), incl. thermal-pad (heat conduction pad)
- 2x triangular keys
- one screw, in case you want to secure your NVMe SSD additionally
- Low profile slot bezel
- Operating instructions are available online on our homepage

**Important:** the NVMe can be additionally secured with a screw if you wish.

### Dimensions (item)

- 167,3 x 120 x 19mm (W x D x H)
- Weight: 141,8g

### Logistical data

#### Dimensions (packaging)

- 230 x 152 x 45mm (W x D x H)
- Weight: 250g

#### Dimensions (export box)

- 485 x 325 x 270mm (W x D x H)
- 20 pieces per carton
- Net weight: 5,59Kg

#### Country of origin

- Taiwan

