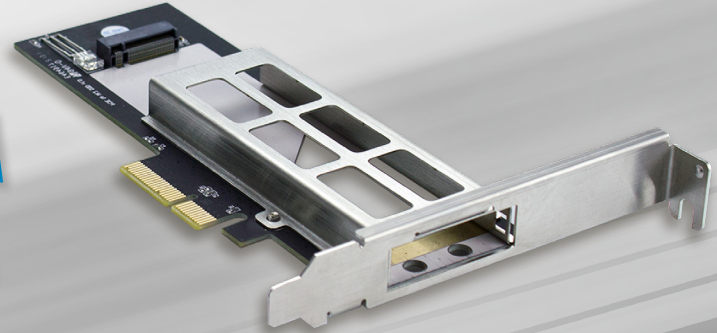


**PCIe 3.0/4.0 NVMe adapter with
removable frame for 1x NVMe SSD
in form factor 2230 to 2280.**

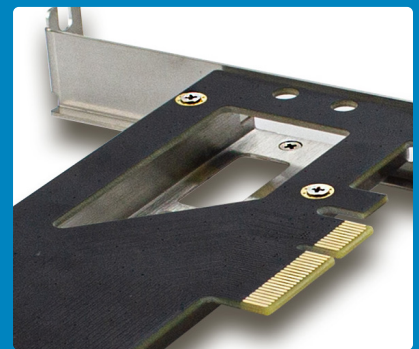
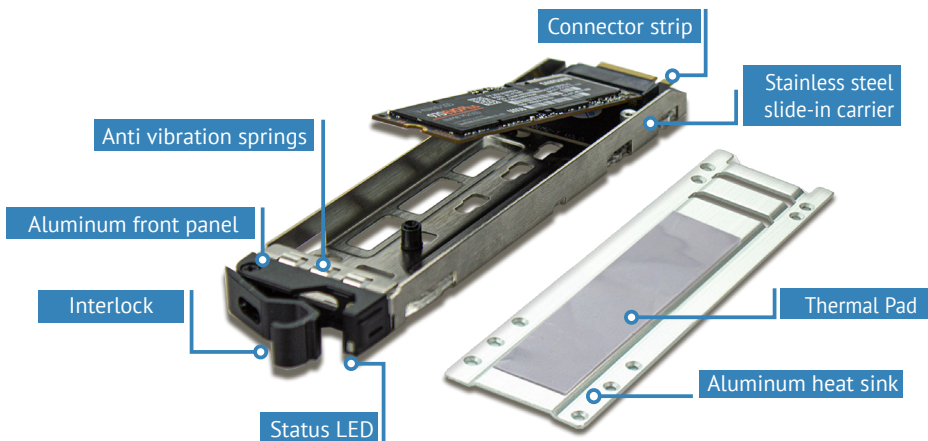
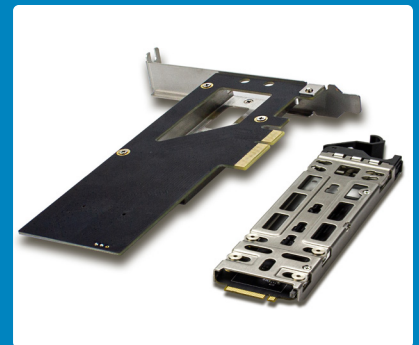


FANTEC NVMePCIe TR-1

With the FANTEC PCIe card you can use an NVMe PCIe SSD internally, removable in your PC. The NVMe SSD is mounted on a slide-in carrier and plugged into the removable frame of the card at the back of your PC via the slot bracket. So you can use and change the NVMe fast, comfortable, without tools in your PC - without opening the PC.

Optimal protection: Your NVMe is safely housed. The sensitive contacts of the NVMe are protected. The slide-in rack uses its own connector strip.

Optimal cooling: Your NVMe is thermally coupled to the aluminum heat sink inside the slide-in carrier with a thermal pad. The heat is conducted to the massive slot bracket via the stainless steel slide-in frame. Due to the open and air-permeable design, the operating heat of your NVMe is optimally transported away. Clarify with the manufacturer of your PC motherboard how a PCIe NVMe is used in your PC.



Specifications

- PCIe PC-adapter card for 1x PCIe NVMe SSD.
- NVMe SSD removable frame for fast, tool-free replacement of the data carrier.
- M.2 NVMe M-key SSD in form factor 2230 to 2280.
- For PCIe 3.0/4.0 x4 NVMe M.2 M-key SSD / PCIe x4 bus slot / PCI Express x4 lane host adapter.
- Transfer rates up to 64Gbit/sec. Depending on the NVMe used and the mainboard.
- Adapters, slot bezels and carrier unit made of stainless steel. Heat conduction plate and front panel of the carrier made of aluminum.
- Two-color LED signals operating status.
- Stainless steel anti-vibration springs reduce PC operating noise.
- Slot brackets: "full height" & "low profile".
- Additional carrier available as accessories with the FANTEC item number 2517.
- Usability and bootability depends on the used mainboard and the installed UEFI version. Please contact the manufacturer of your mainboard for information on these topics.
- When inserting the carrier, make sure that it is locked correctly: Please push the carrier completely into the removable frame.

